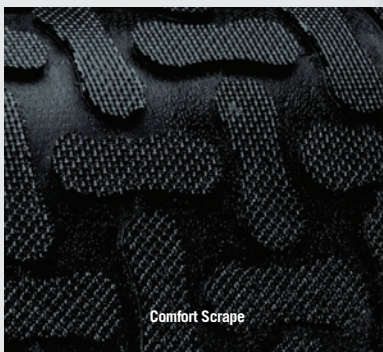




**ANTI-FATIGUE/SLIP RESISTANT/DRY OR WET ENVIRONMENTS
INDOOR-OUTDOOR**



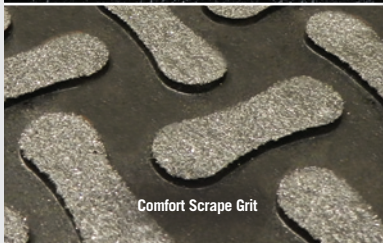
Comfort Flow



Comfort Scape



Comfort Flow Grit



Comfort Scape Grit



COMFORT FLOW & COMFORT SCRAPE

- High Density Closed Cell Nitrile Rubber Cushion has 15% recycled content
- Grease and oil proof, chemical resistant
- Static Dissipative and certified slip resistant by National Floor Safety Institute
- Welding Safe
- Beveled edges for safe transition from mat to floor
- Lifetime anti-microbial treatment to prevent odors and degradation of the mat
- Comfort Flow has drainage holes to allow liquids to flow through. Comfort Scape has non-draining surface
- Light weight and flexible for easy handling and cleaning
- Recommended for kitchens and industrial applications

COMFORT FLOW GRIT & COMFORT SCRAPE GRIT

- Same features as above, but with an added aggressive silicon carbide anti-slip top surface



**ANTI-FATIGUE/SLIP RESISTANT/DRY OR WET ENVIRONMENTS
INDOOR-OUTDOOR**



COMFORT FLOW

Product No. 420

Size	Size Approx. in.	Quantity/Price			Shipping Wt. (lbs)
		1-6	7-30	31+	
2' x 3'	23 x 34				6
3 x 5	34 x 56				15
4 x 6	42 x 68				24
3 x 9	34 x 109				30

COMFORT FLOW GRIT

Product No. 4200

Size	Size Approx. in.	Quantity/Price			Shipping Wt. (lbs)
		1-6	7-30	31+	
2' x 3'	23 x 34				7
3 x 5	34 x 56				17
4 x 6	42 x 68				28
3 x 9	34 x 109				32

COMFORT SCRAPE

Product No. 430

Size	Size Approx. in.	Quantity/Price			Shipping Wt. (lbs)
		1-6	7-30	31+	
2' x 3'	23 x 34				7
3 x 5	34 x 56				17
4 x 6	42 x 68				26
3 x 9	34 x 109				31

COMFORT SCRAPE GRIT

Product No. 4300

Size	Size Approx. in.	Quantity/Price			Shipping Wt. (lbs)
		1-6	7-30	31+	
2' x 3'	23 x 34				8
3 x 5	34 x 56				20
4 x 6	42 x 68				32
3 x 9	34 x 109				36



Comfort Flow Grit



ONE SOURCE FOR MATS

1-706-277-2551
www.andersenco.com

www.andersenco.com

Product Video

